

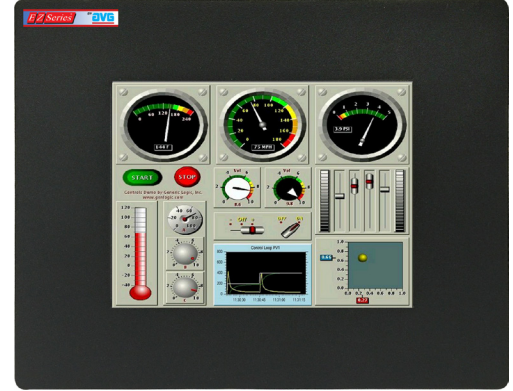


# EZTouch 5.1" Color Panel

## 5.1" Color EZTouch

EZTouch 5.1" color panel has a 5.1" diagonal touch screen with 320x240 pixel resolution. This panel has STN color LCD (liquid crystal display) with 128 colors.

All these panels have a very low slim profile along with a smaller footprint on enclosures.



### 5.1" Color model features:

- 5.1" diagonal color STN LCD
- Low-profile slim aluminum metal bezel
- 128 colors
- NEMA 4,4X
- 320x240 pixel resolution
- 75,000 hour expected bulb half-life
- 48 touch cells (8x6)
- 1/4" gasket and four DIN mounting clips
- 9-Pin D-Sub Serial Port for Programming
- 15-Pin D-Sub Serial Port for RS232/RS422/RS485 Communications

Part Number	Description	Price	Del.
EZJ-S6C-FS	All Serial Drivers	\$399	STK

#### Notes:

1. These panels do not have a built-in Real-time clock and program back-up battery as the user program stored in flash
2. They do not have the option for use of Network cards such as DH+ or Profibus

[Click here for all supported PLC protocols.](#)

