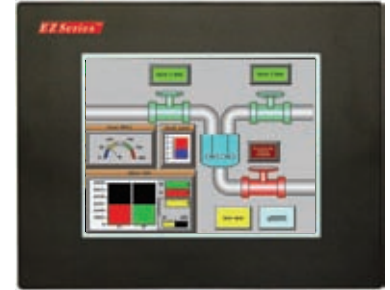


EZTouch[®] White LED Durapanel 8" TFT Color

8" Color EZ Durapanel (8" TFT)

EZSeries 8" Durapanel has a 8" diagonal touch screen with 640x480 pixel resolution.



8" EZ Durapanel common features:

- White LED backlight
- 8" diagonal color TFT LCD
- Low-profile slim bezel design
- 0.070" thick hard surface engineered plastic touchscreen
- NEMA 4, 4X
- 640x480 pixel resolution
- 400 nits brightness
- 75,000 hour LED backlight life
- 1/4" gasket and four DIN mounting clips for NEMA 4, 4X
- 2.3" (59.0mm) installed depth
- Has all 4,000 Library symbols
- Pass-through programming to any PLC
- Remote Monitoring & Control
- Safety/Redundant HMI feature built-in
- Screen Print command for 21 CFR part 11 (FDA)
- Exclusive on-line editing of HMI screen
- Programmed with EZSeries programming software

8" CE EZ Durapanel features:

- CE File viewers such as Acrobat, Excel, Word, PowerPoint, Image and Internet Explorer
- Option to turn-off CE feature on power-on
- 65,536 colors
- Analog resistive touch screen
- Alchemy 333 MHz Processor
- 32MB Flash, 64MB RAM and 2 MB for HMI
- 1 USB & 1 Ethernet port
- Typical Touchscreen response 0.75 sec

8" SE EZ Durapanel features:

- 65,536 colors
- 192 resistive touch cells
- 1 USB & 1 Ethernet port for SE model
- Built-in RAM 512K, Built-in Flash 1MB
- No Real Time Clock, No RAM expansion, No Flash card
- Typical Touchscreen response 1.25 sec

EZDurapanel CE OS

Part #	Description	Price
<i>EZCD-T8C-E</i>	8" TFT, CE 4.2 PP	\$1149
<i>EZCD-T8C-EH</i>	8" TFT, CE 4.2 PP, DH+	\$1849
<i>EZCD-T8C-EM</i>	8" TFT, CE 4.2 PP, MB+	\$1849
<i>EZCD-T8C-EP</i>	8" TFT, CE 4.2 PP, Profibus	\$1849
<i>EZCD-T8C-EC</i>	8" TFT, CE 4.2 PP, CCLink	\$1849

EZDurapanel Dedicated OS

Model #	Interface	Price
<i>EZD-T8C-FS</i>	8" TFT Dedicated OS, Fast response, accepts network cards	\$1049
<i>EZD-T8C-FH</i>	DH+, Remote I/O	\$1799
<i>EZD-T8C-FM</i>	8" TFT with Modicon MOD-BUS Plus	\$1799
<i>EZD-T8C-FP</i>	8" TFT with Profibus	\$1799
<i>EZD-T8C-FC</i>	8" TFT with CCLink	\$1799
<i>EZD-T8C-FS-RMC</i>	8" TFT with RMC card Installed	\$1199

8" Standard Dedicated OS EZ Durapanel features:

- Typical Touchscreen response 0.5 sec
- 128 colors
- 512K RAM expandable to 1.5MB
- 512K, 1MB or 2MB option flash card for memory backup
- 192 touch cells (16x12)

EZDurapanel SE Series

Model Number	Interface	Price
<i>EZD-T8C-S</i>	8" TFT with All Serial drivers	\$799
<i>EZD-T8C-SE</i>	8" TFT with All Serial and Ethernet drivers. Ethernet IP with array logic, ControlLogix, MicroLogix and SLC, DirectLogic E-Com, Modbus TCP/IP, EZ IP, GE SRTP. Built-in USB	\$899

